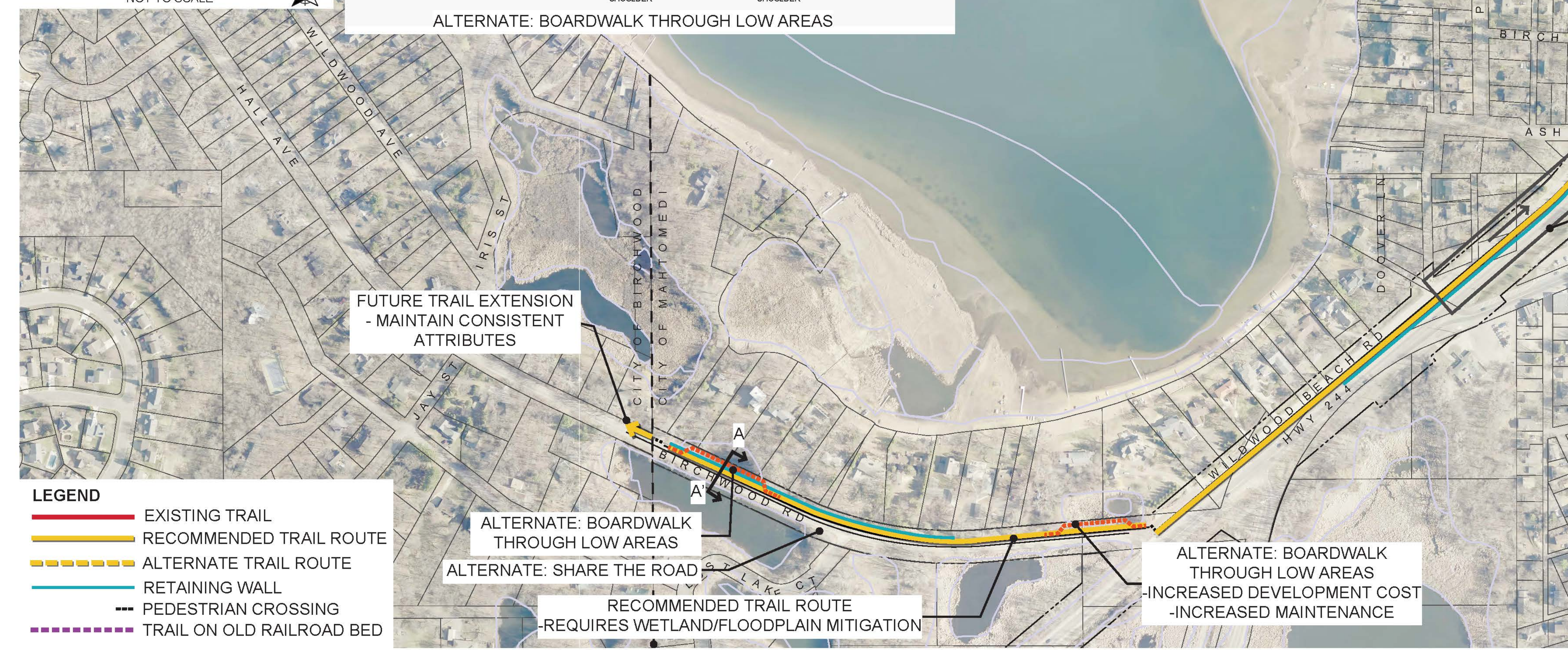
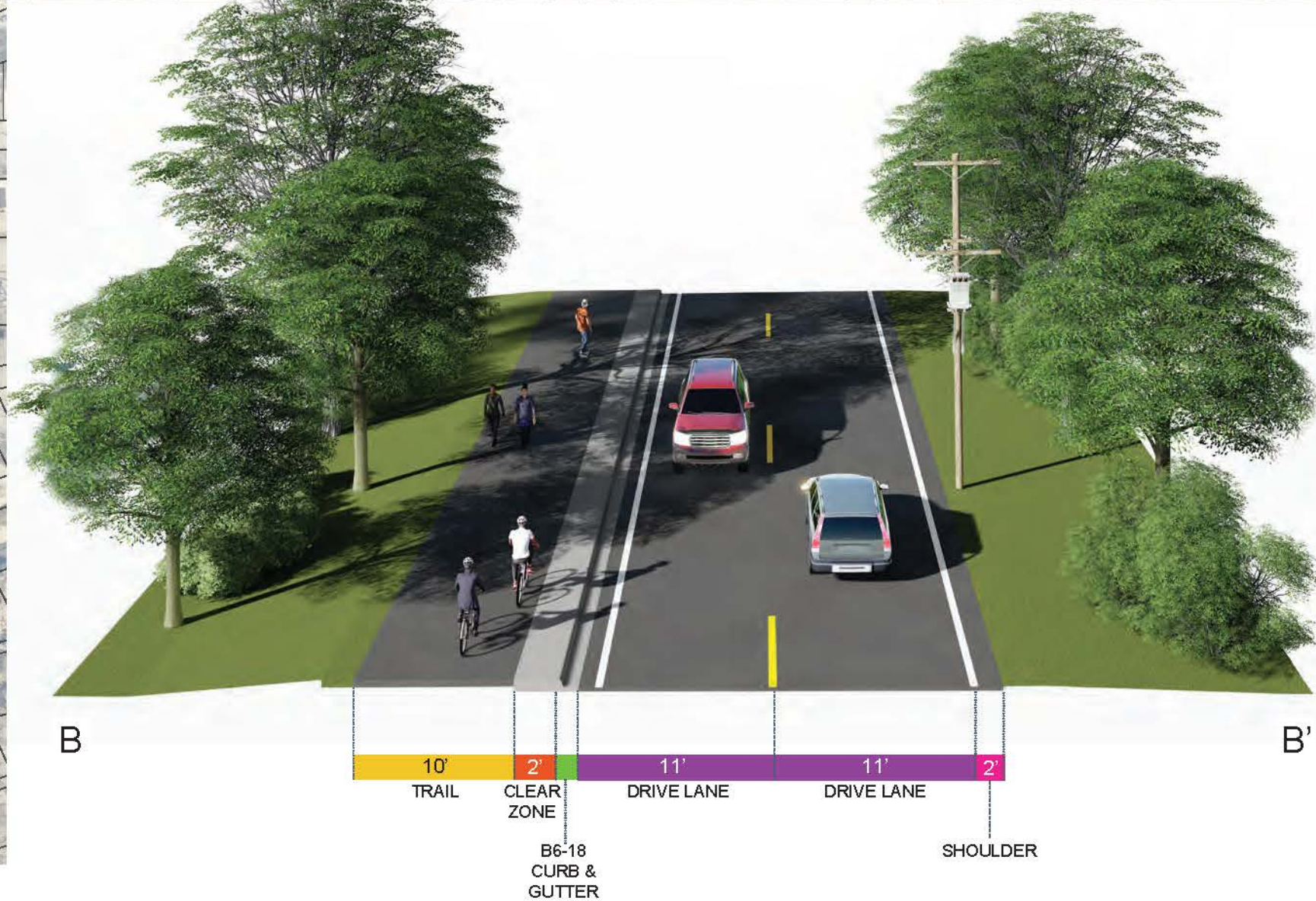
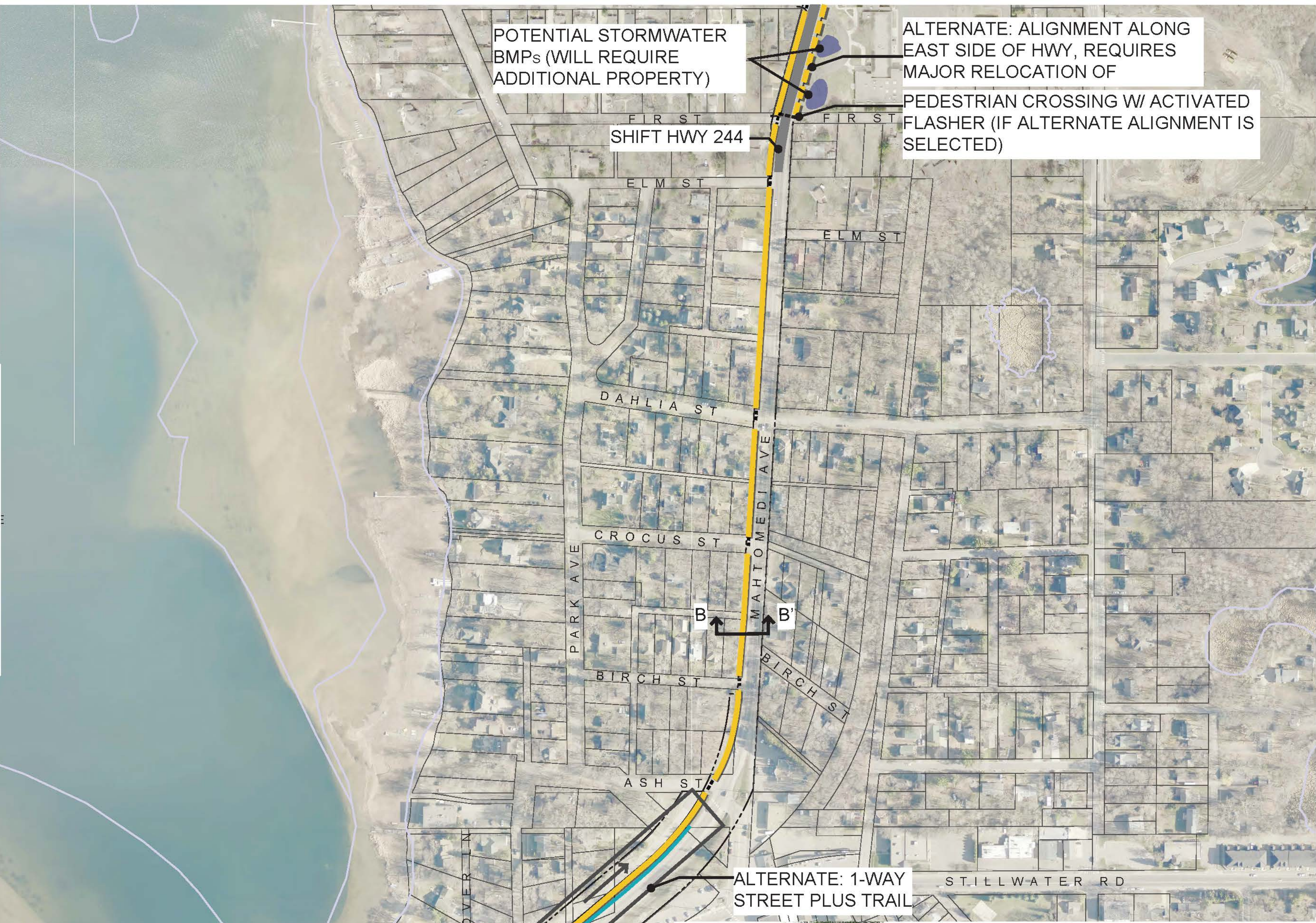


ALTERNATE: BOARDWALK THROUGH LOW AREAS

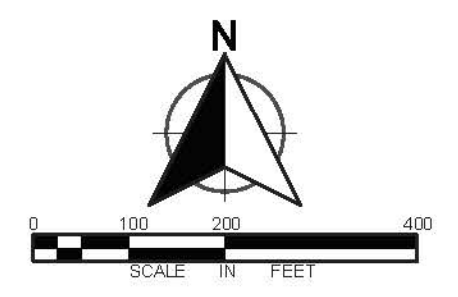


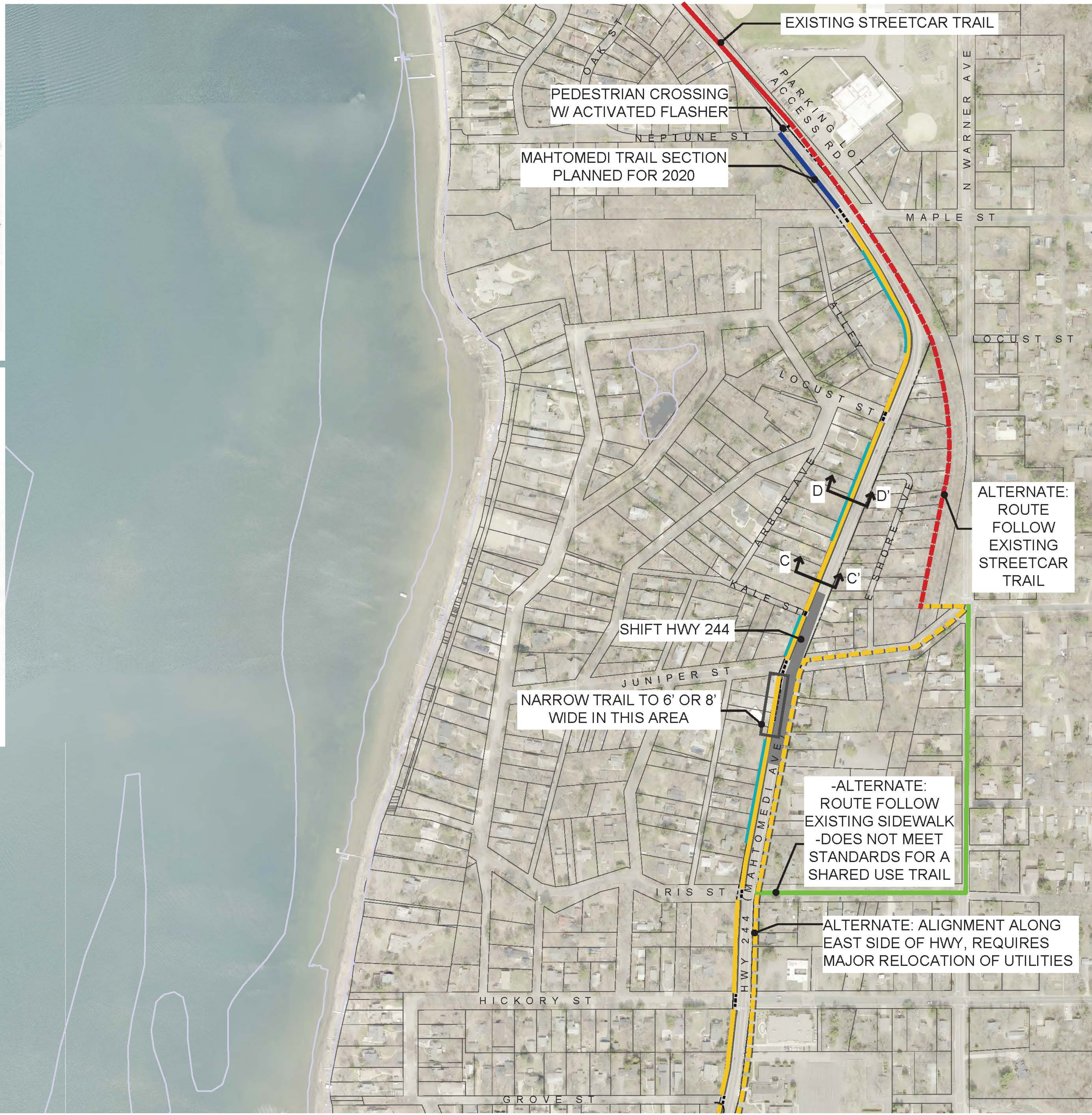
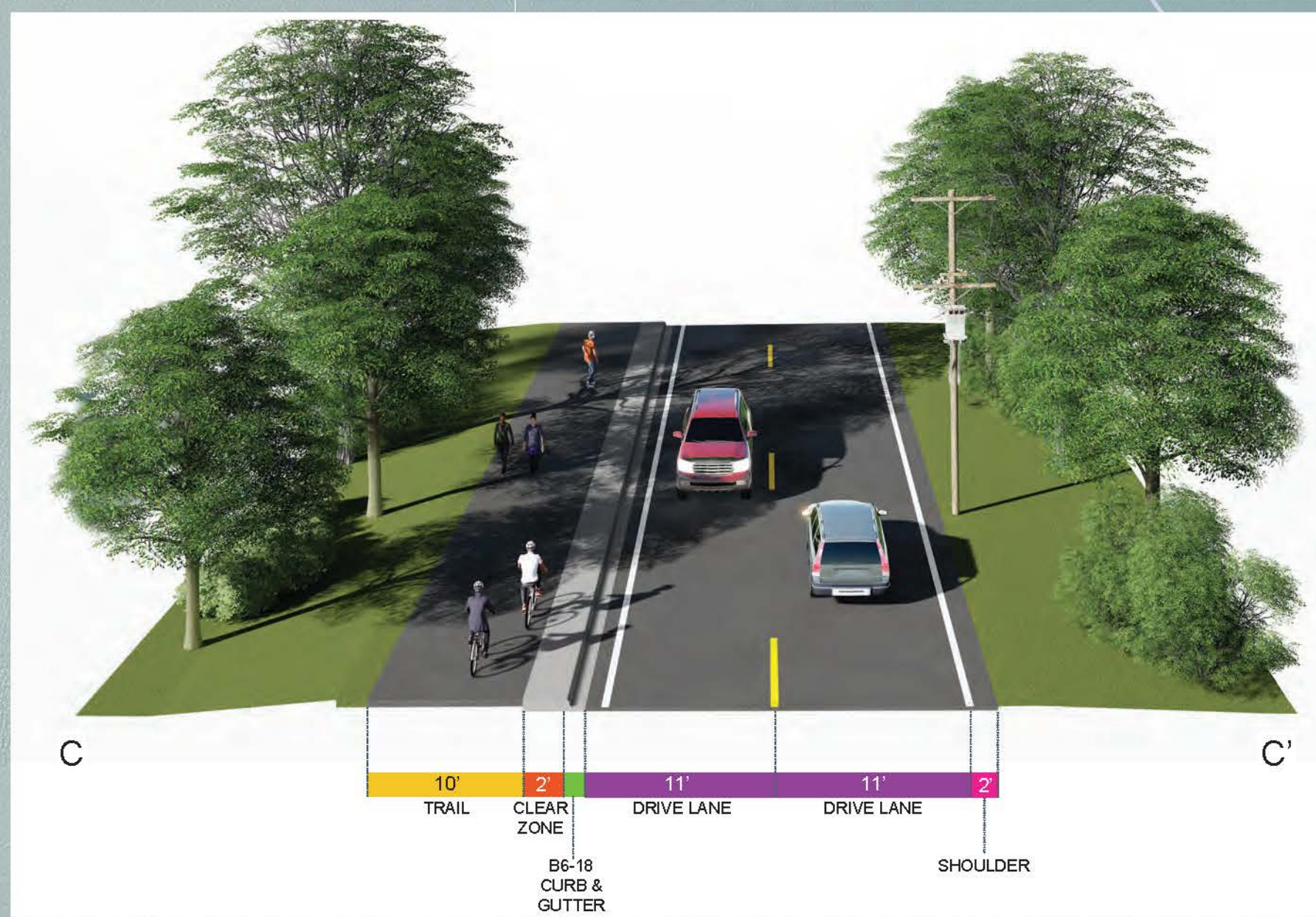
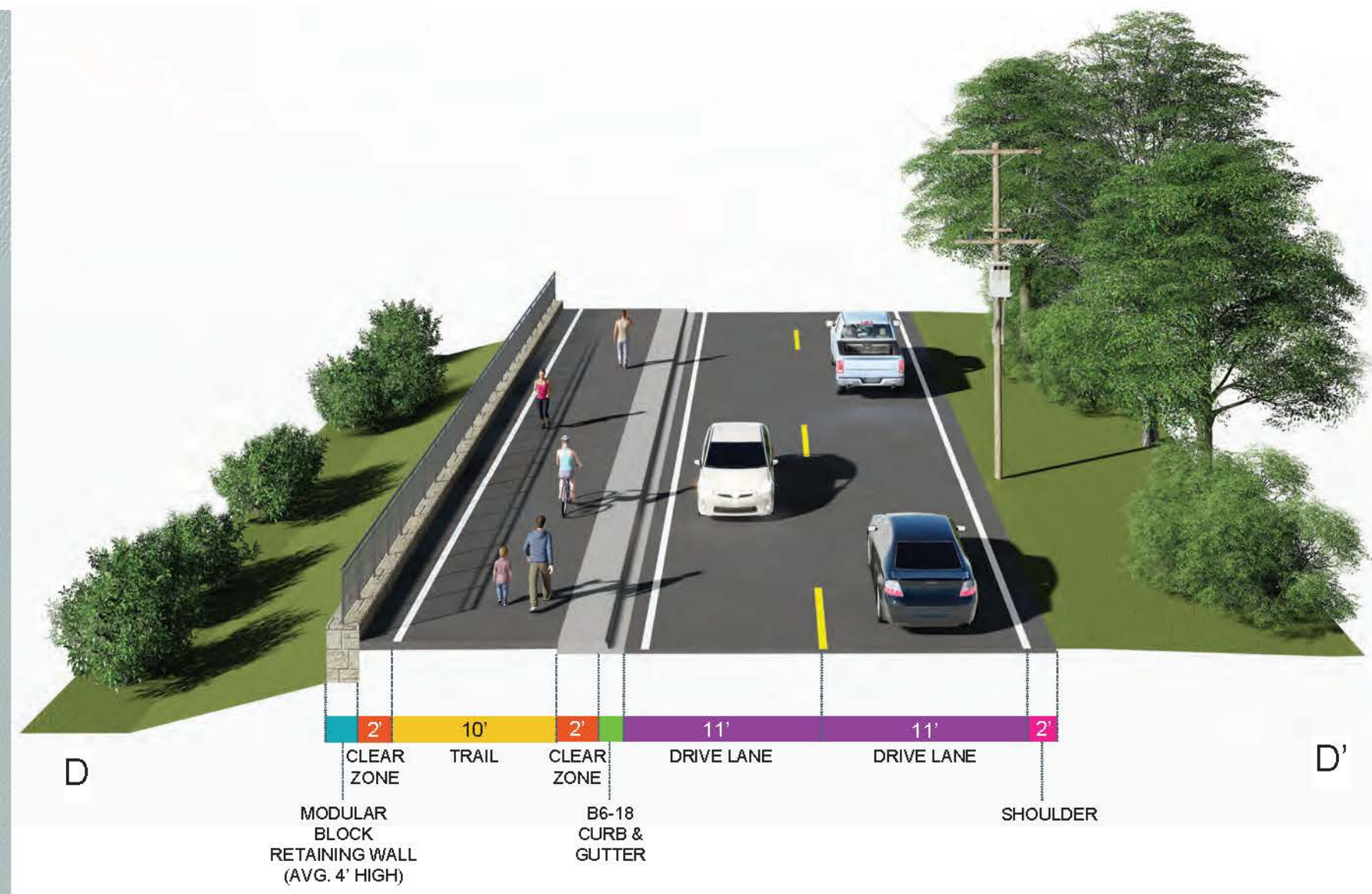
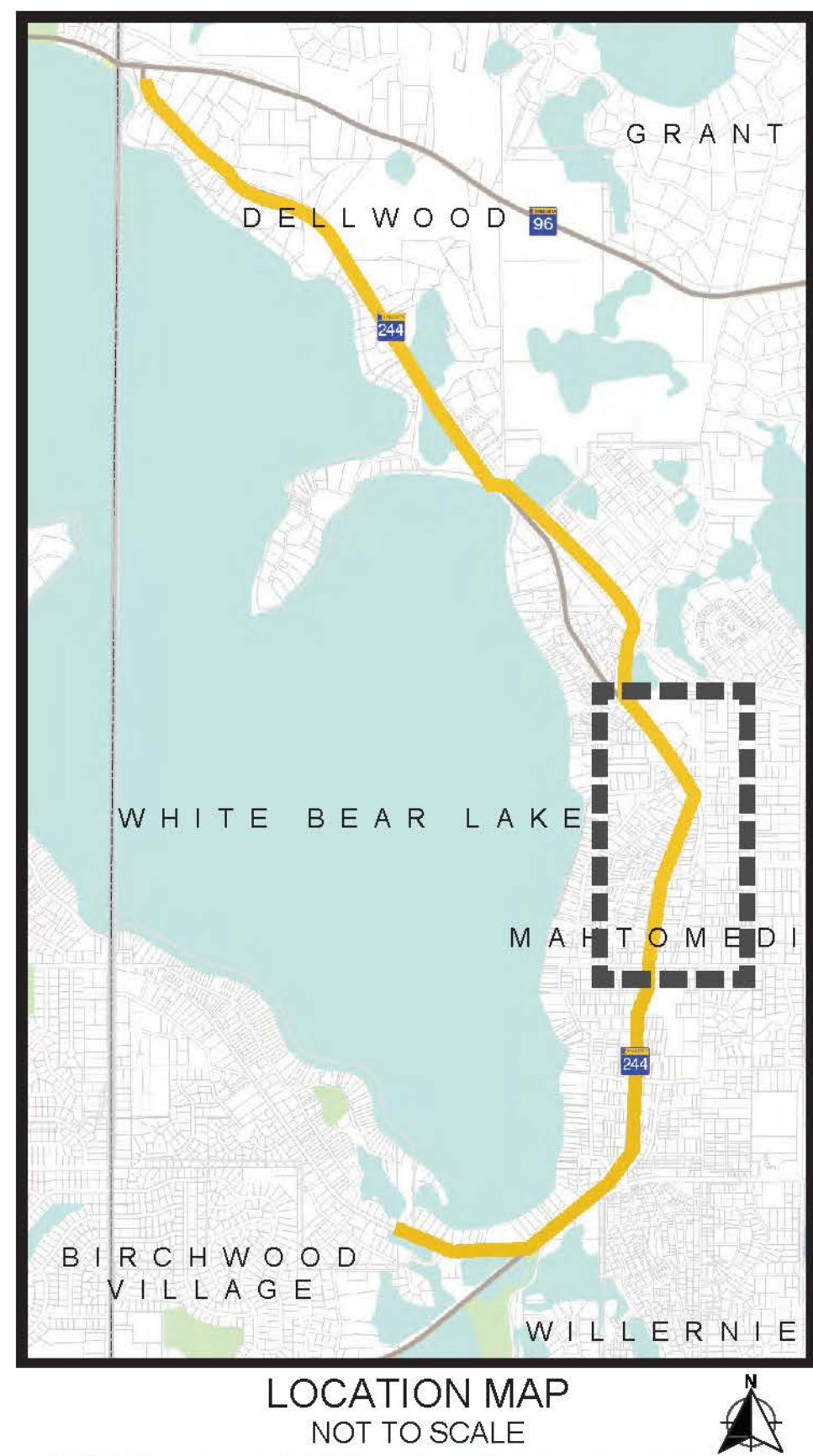
- LEGEND**
- EXISTING TRAIL
 - RECOMMENDED TRAIL ROUTE
 - ALTERNATE TRAIL ROUTE
 - RETAINING WALL
 - PEDESTRIAN CROSSING
 - TRAIL ON OLD RAILROAD BED



LAKE LINKS TRAIL

SCHEMATIC DESIGN PLAN
 Mahtomedi, Minnesota | Dellwood, Minnesota
 01/18/2018 010871-000 | 010955-000

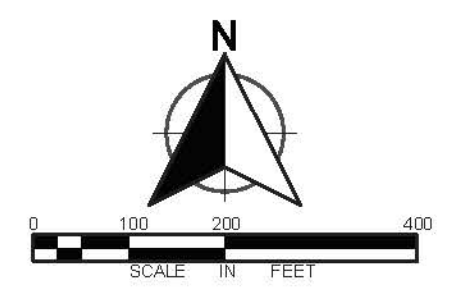




- LEGEND**
- EXISTING TRAIL
 - RECOMMENDED TRAIL ROUTE
 - - - ALTERNATE TRAIL ROUTE
 - RETAINING WALL
 - - - PEDESTRIAN CROSSING
 - - - TRAIL ON OLD RAILROAD BED

LAKE LINKS TRAIL

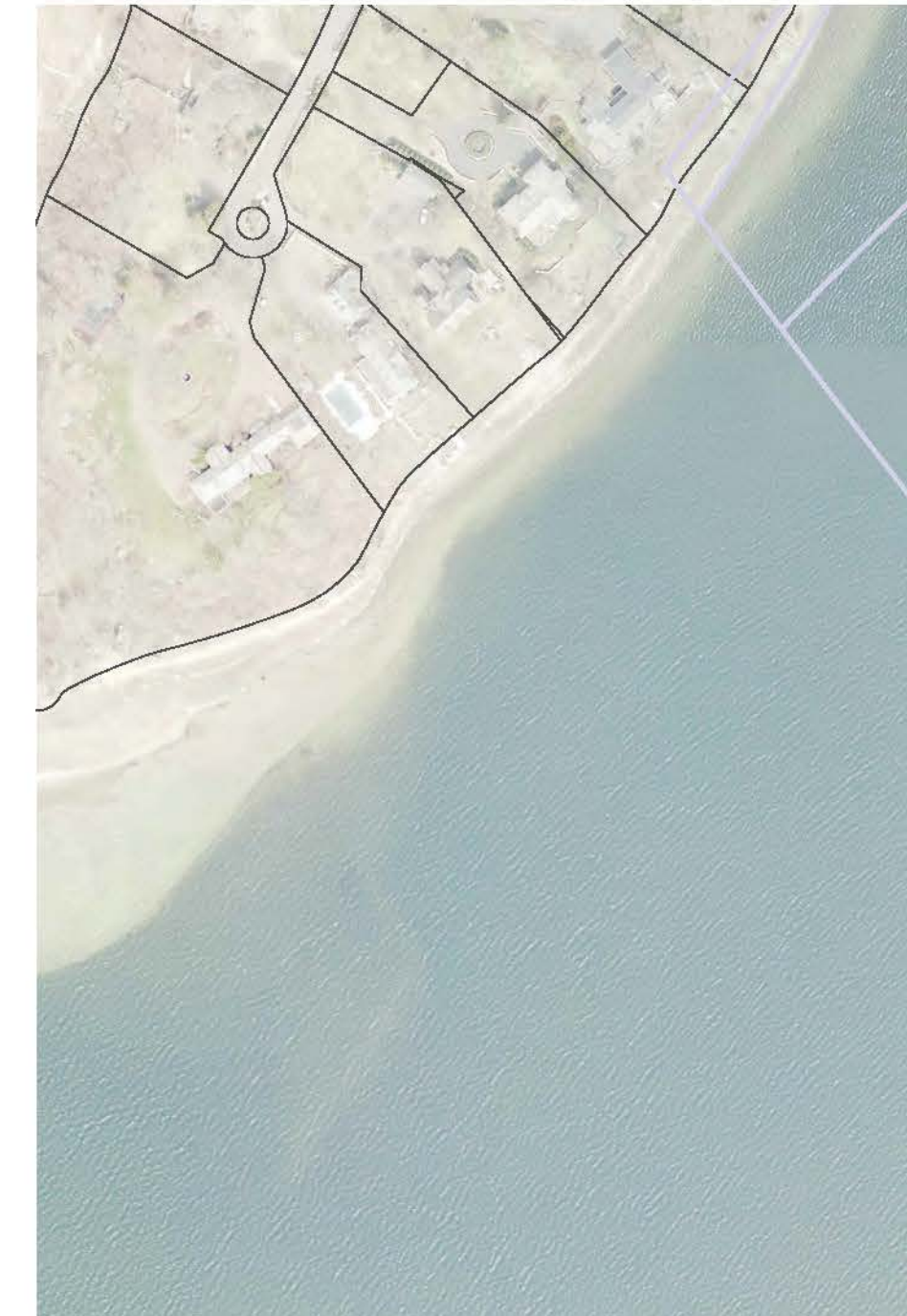
SCHEMATIC DESIGN PLAN
 Mahtomedi, Minnesota | Dellwood, Minnesota
 01/18/2018 010871-000 | 010955-000



K:\101071-000\Cadd\Subarea\101071-000 Lake Links Trail.dwg



LOCATION MAP
NOT TO SCALE



ALTERNATE: TRAIL ROUTE
WILL REQUIRE MITIGATION OF
WETLAND/FLOODPLAIN

RECOMMENDED: TRAIL
ON OLD RAILROAD BED
(ADDITIONAL R.O.W. OR
EASEMENT REQUIRED)

'SHARE THE ROAD' BRIARWOOD
IMPROVEMENTS FOR 2018

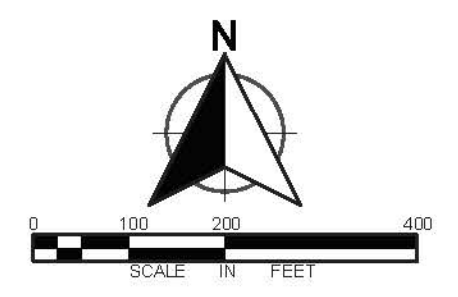
EXISTING STREETCAR TRAIL

- LEGEND**
- EXISTING TRAIL
 - RECOMMENDED TRAIL ROUTE
 - - - ALTERNATE TRAIL ROUTE
 - RETAINING WALL
 - - - PEDESTRIAN CROSSING
 - - - TRAIL ON OLD RAILROAD BED

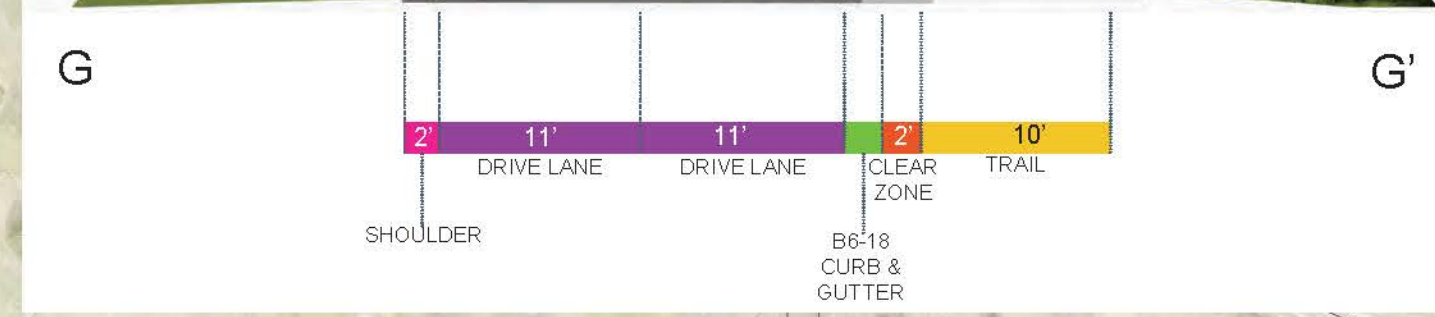
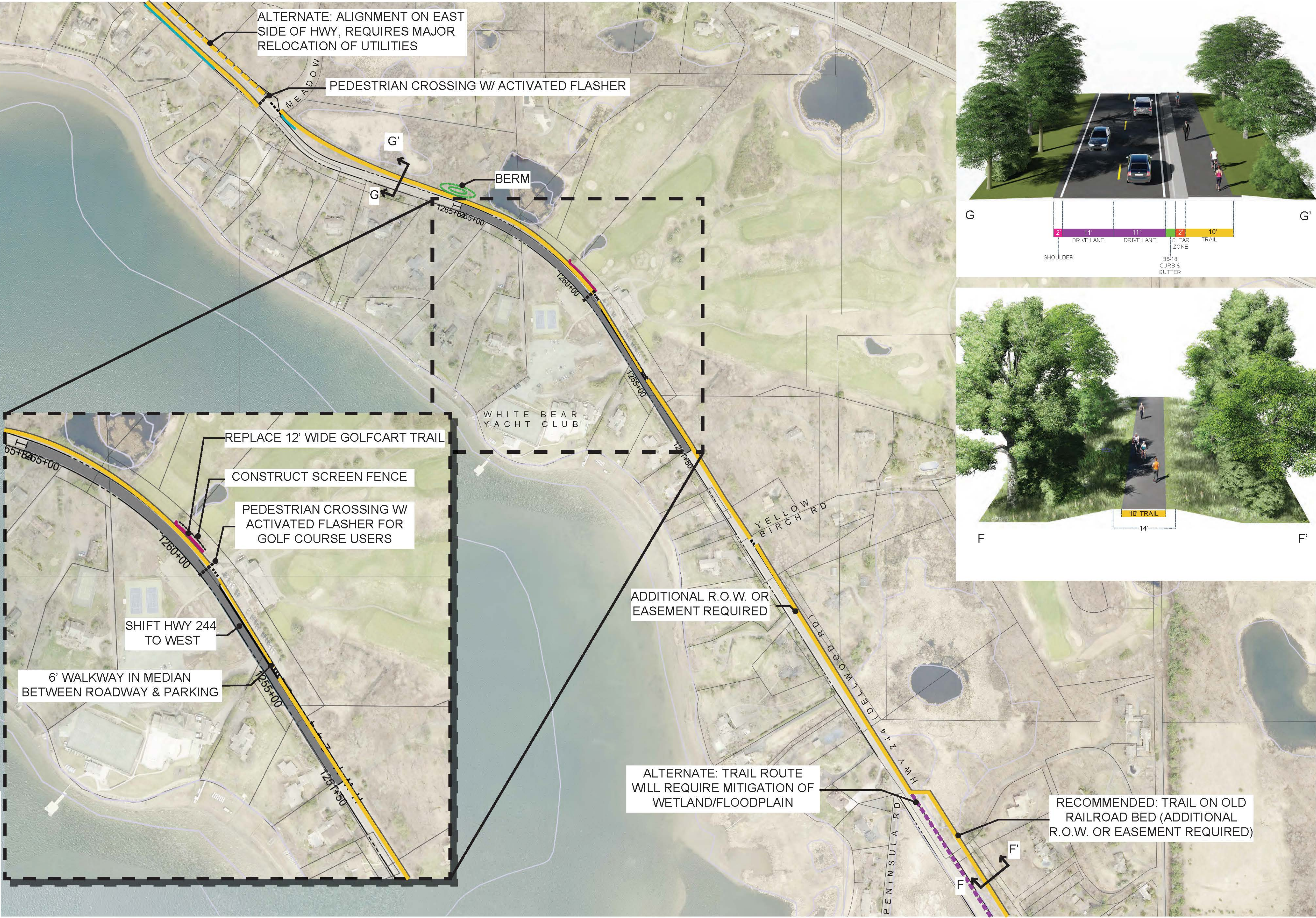
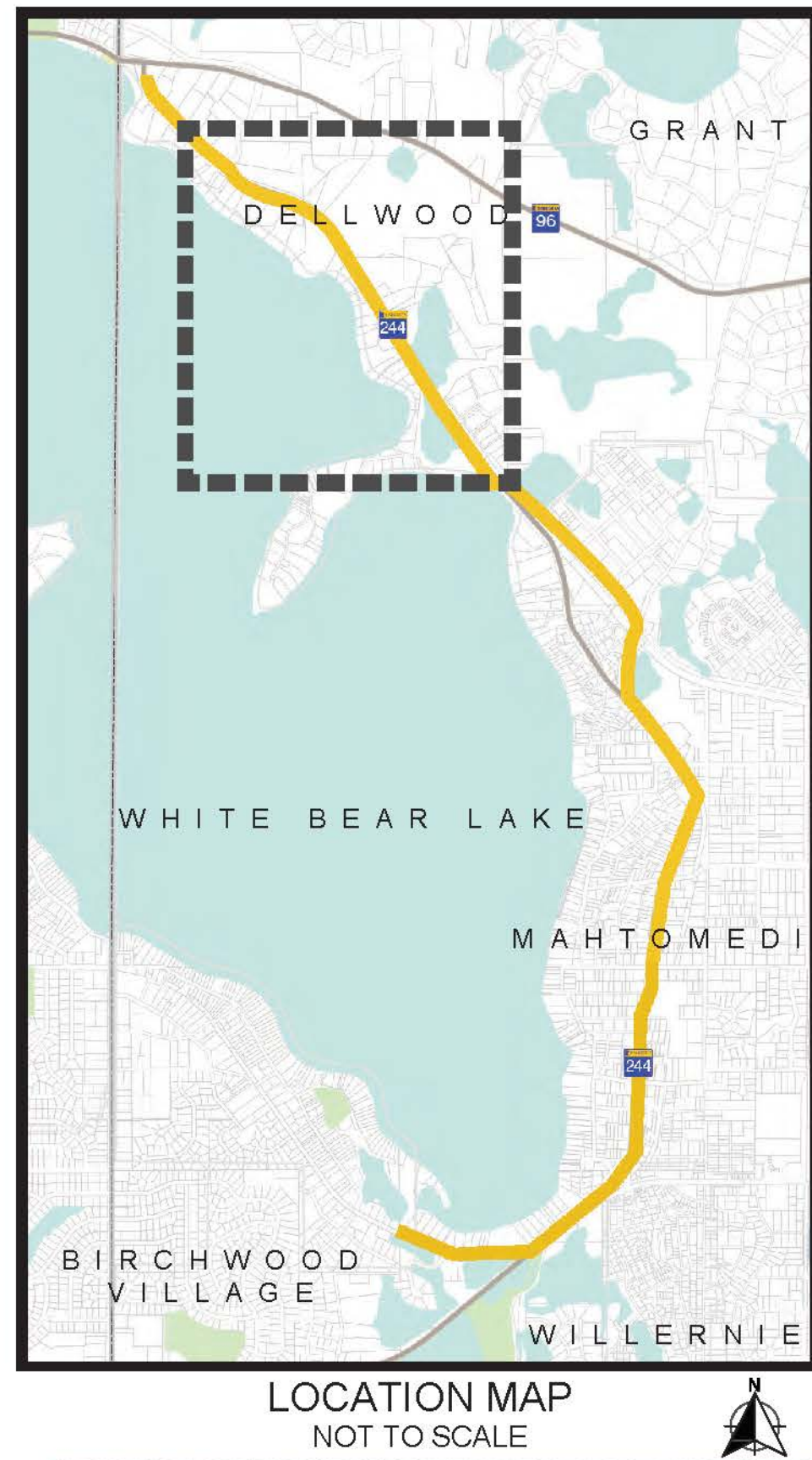


LAKE LINKS TRAIL

SCHEMATIC DESIGN PLAN
Mahtomedi, Minnesota | Dellwood, Minnesota
01/18/2018 010871-000 | 010955-000



K:\010871-000\010955\010955-000 Lake Links Trail.dwg

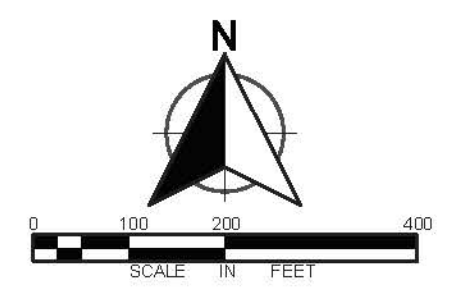


- LEGEND**
- EXISTING TRAIL
 - RECOMMENDED TRAIL ROUTE
 - - - ALTERNATE TRAIL ROUTE
 - RETAINING WALL
 - - - PEDESTRIAN CROSSING
 - - - TRAIL ON OLD RAILROAD BED

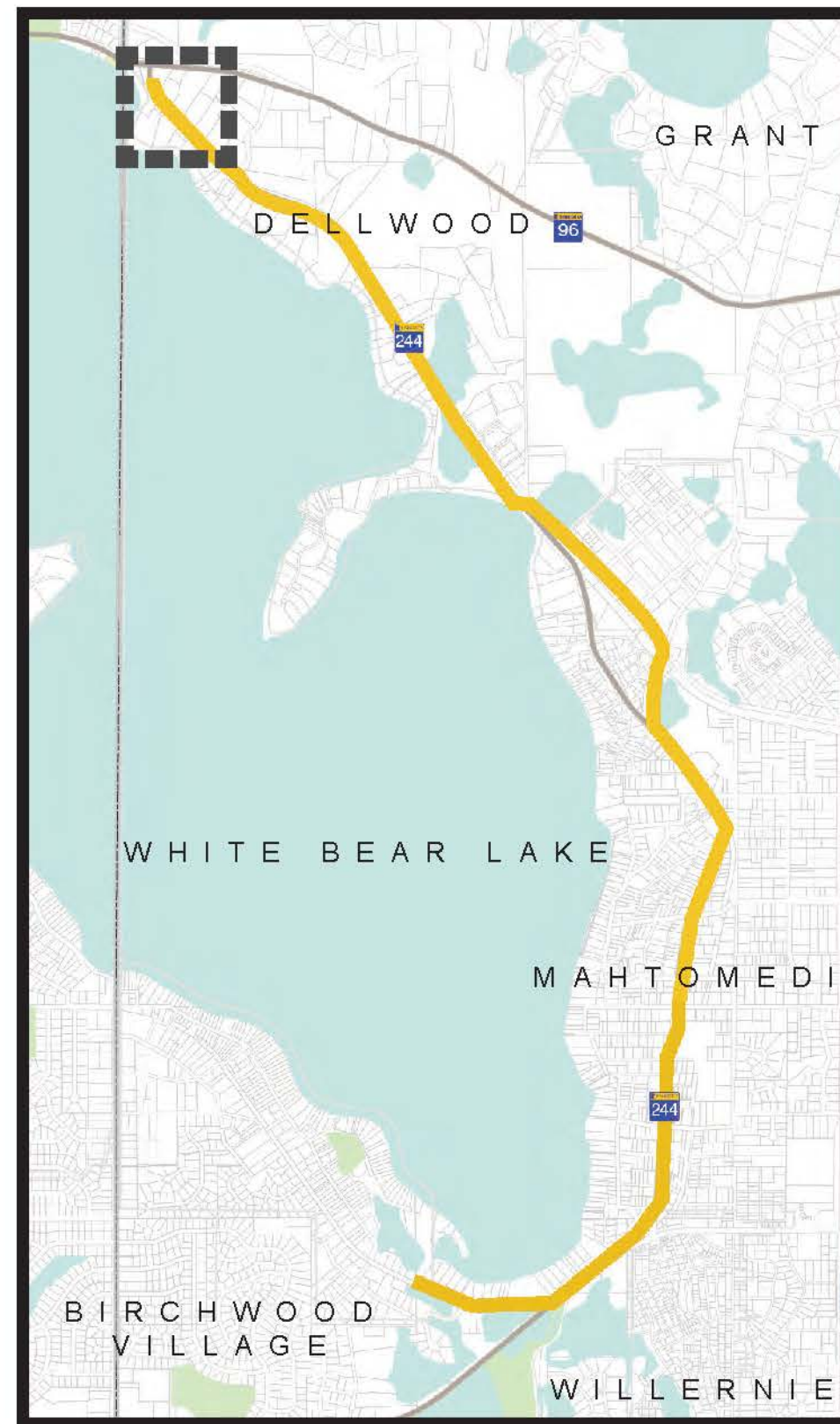
LAKE LINKS TRAIL

SCHEMATIC DESIGN PLAN
 Mahtomedi, Minnesota | Dellwood, Minnesota
 01/18/2018 010871-000 | 010955-000

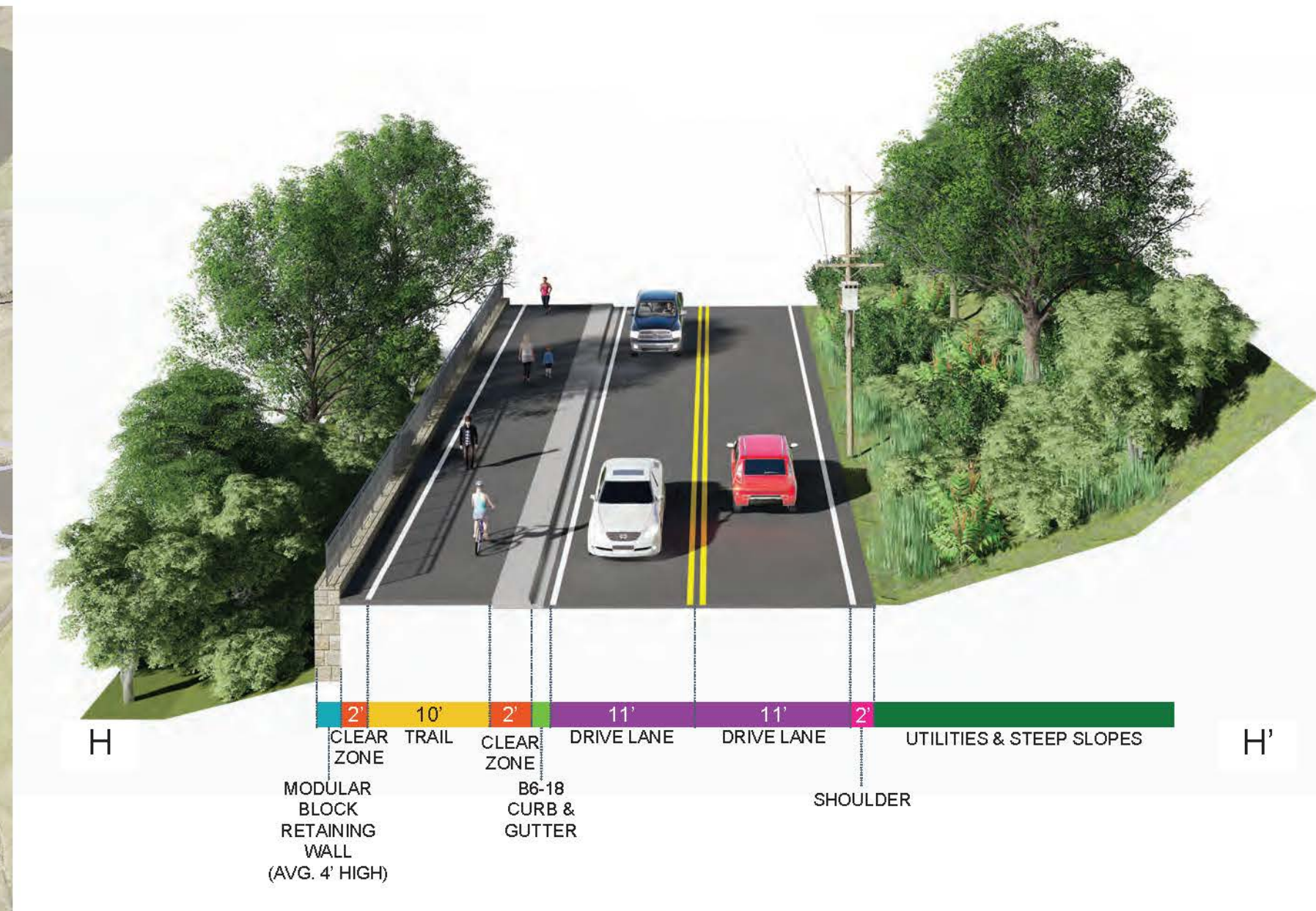
SHEET 4 OF 5



K:\010871-000\010955-000\Lake Links Trail\Sheet4.dwg



LOCATION MAP
NOT TO SCALE



- LEGEND**
- EXISTING TRAIL
 - RECOMMENDED TRAIL ROUTE
 - - - ALTERNATE TRAIL ROUTE
 - RETAINING WALL
 - - - PEDESTRIAN CROSSING
 - - - TRAIL ON OLD RAILROAD BED

RECOMMENDED: ALIGNMENT TO FOLLOW OLD RAILROAD BED-REQUIRES ADDITIONAL PROPERTY OR EASEMENT

POTENTIAL STORMWATER BMPs WITHIN EXISTING R.O.W. OR CITY OWNED PROPERTY

ALTERNATE: ALIGNMENT ON EAST SIDE OF HWY REQUIRES MAJOR RELOCATION OF UTILITIES



LAKE LINKS TRAIL

SCHEMATIC DESIGN PLAN
Mahtomedi, Minnesota | Dellwood, Minnesota
01/18/2018 010871-000 | 010955-000

